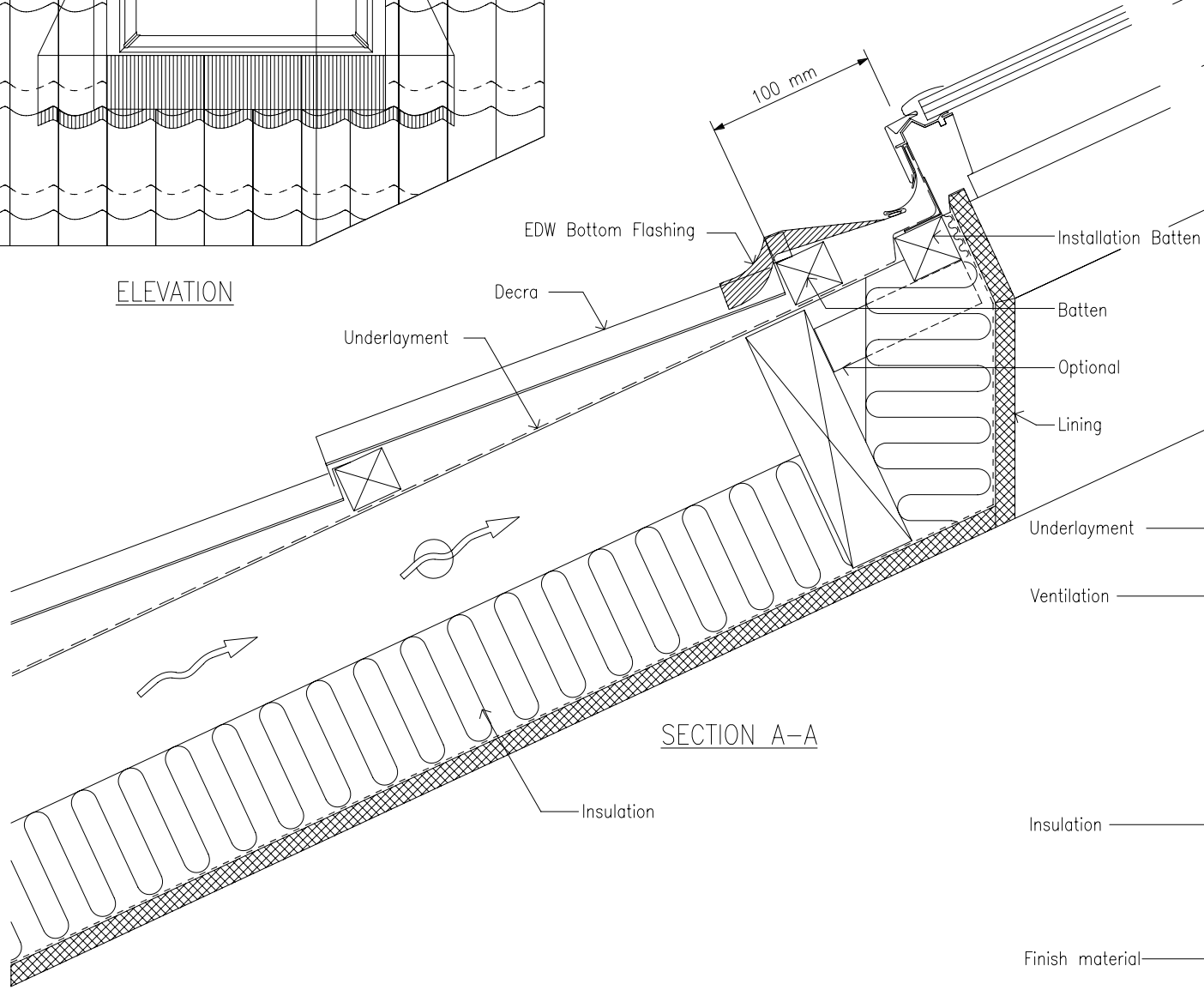
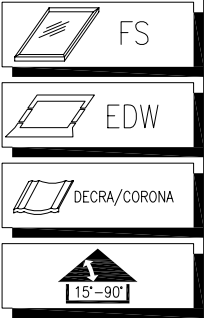
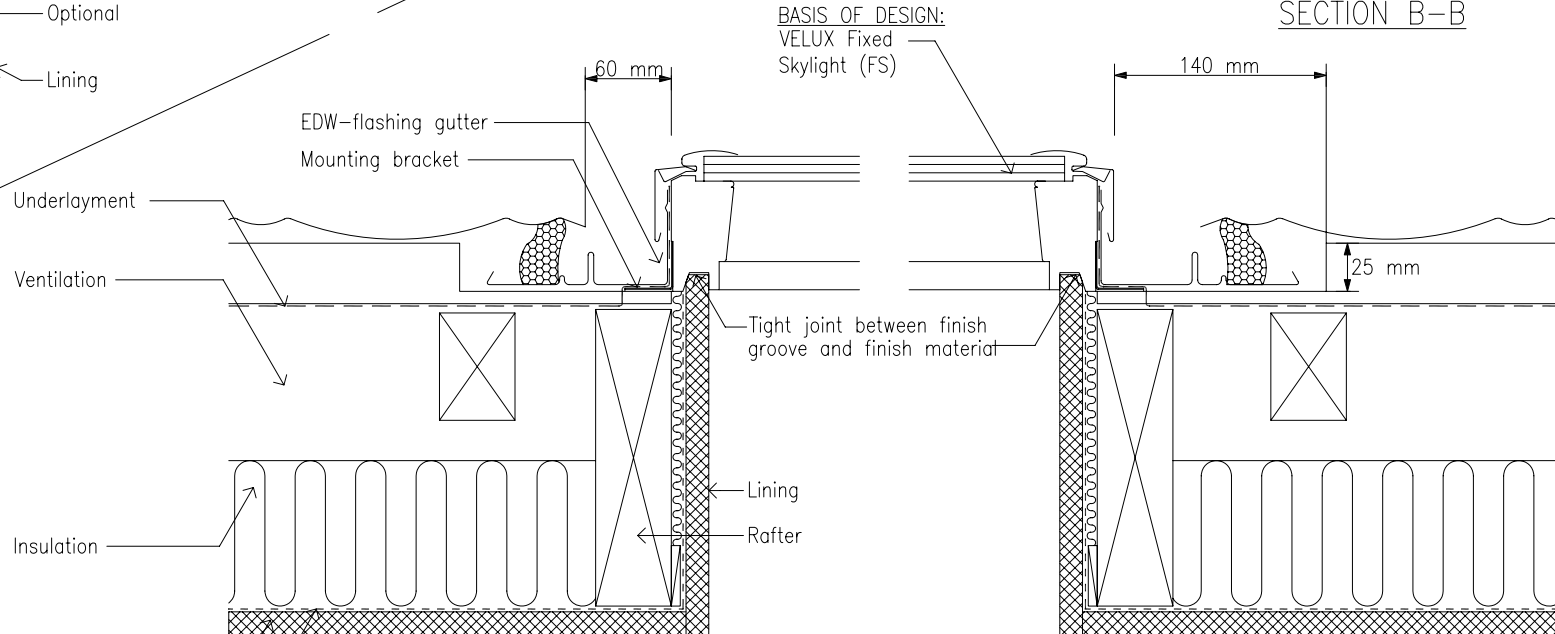
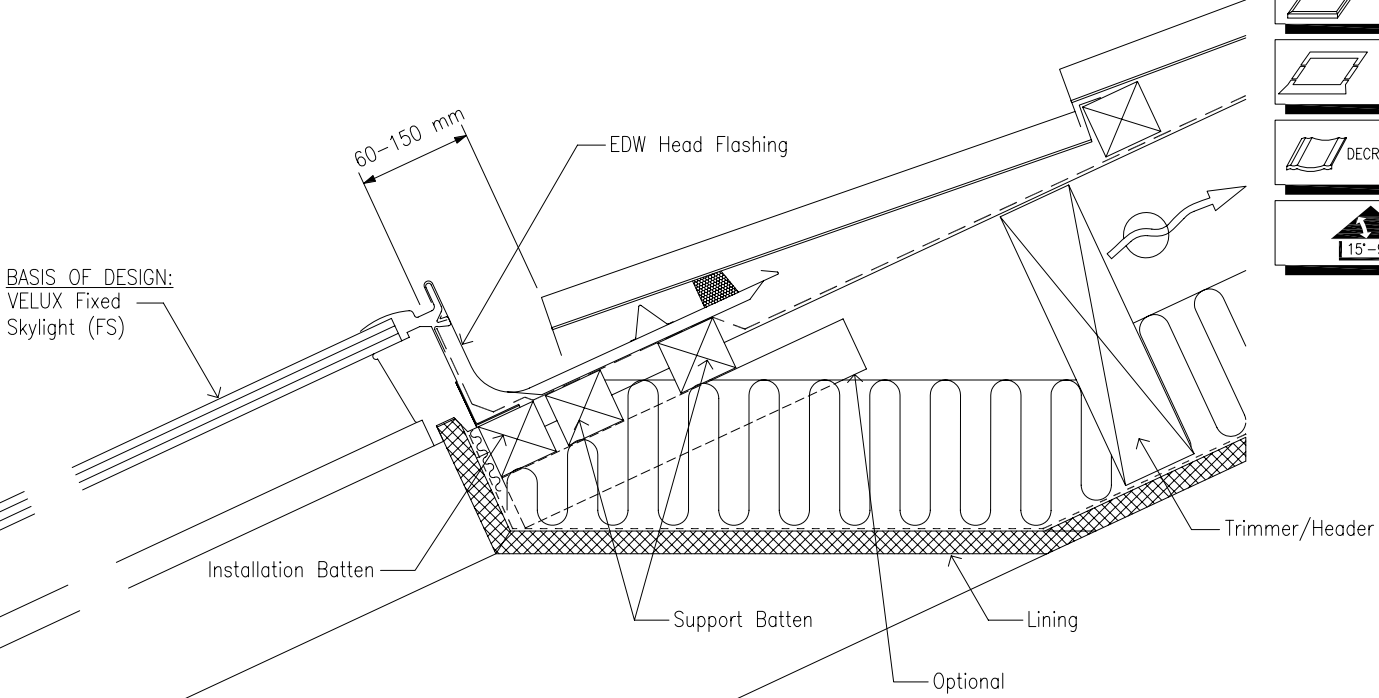


ELEVATION

Please note:
Due to the design of Decrabond/Corona type roofing materials it is important that the roof battens are rebated 25 mm around the perimeter of the VELUX Skylight, for the EDW flashing, to maintain aesthetics.



SECTION A-A



SECTION B-B

VELUX Sky-Product Management	AUSTRALIA PTY. LTD +612 8565 6000		Name	Date
			Drawn by	Oct 09
			Checked by	Oct 09
			Drawing No.	
FS - Fixed Skylight and EDW Flashing in Decratile Roof				